

## How to Change Expired Passwords in OWA 2007 on Windows Server 2003 (IIS 6)

*Note: This was done while having the latest updates for Windows and Exchange 2007 SP3, no hotfixes are needed!*

To be on the safe side register the IISpwchg.dll file in the IISadmpwd directory:

Click **Start**, and then click **Run**.

In the **Open** box, type the following, and then press ENTER:

```
regsvr32 c:\windows\system32\inetsrv\iisadmpwd\iispwchg.dll
```

Configure the **PasswordChangeFlags** property in the metabase to make sure that the Password Change functionality is enabled:

Click **Start**, and then click **Run**.

In the **Open** box, type **cmd**, and then press ENTER.

Locate the C:\inetpub\Adminscripts directory.

Type the following command, and then press ENTER:

```
cscript.exe adsutil.vbs set w3svc/passwordchangeflags 0
```

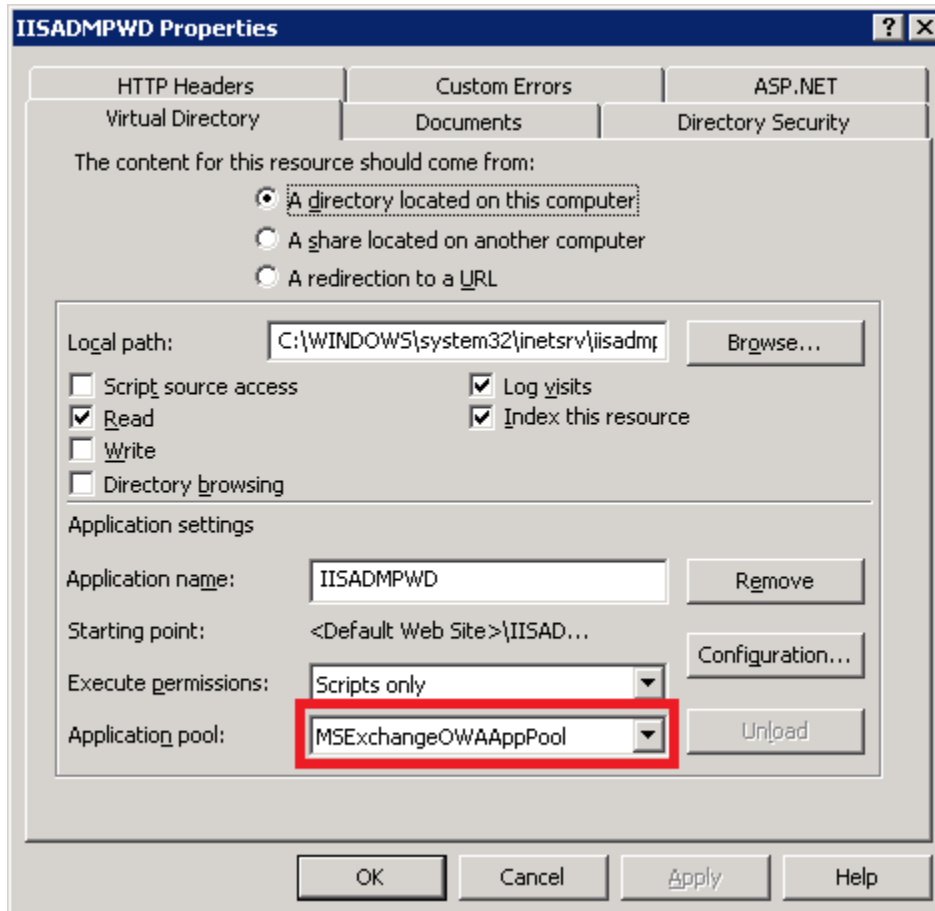
To create a virtual directory for the IISadmpwd directory, follow these steps:

Click **Start**, click **Programs**, click **Administrative Tools**, and then click **Internet Information Services (IIS) Manager**.

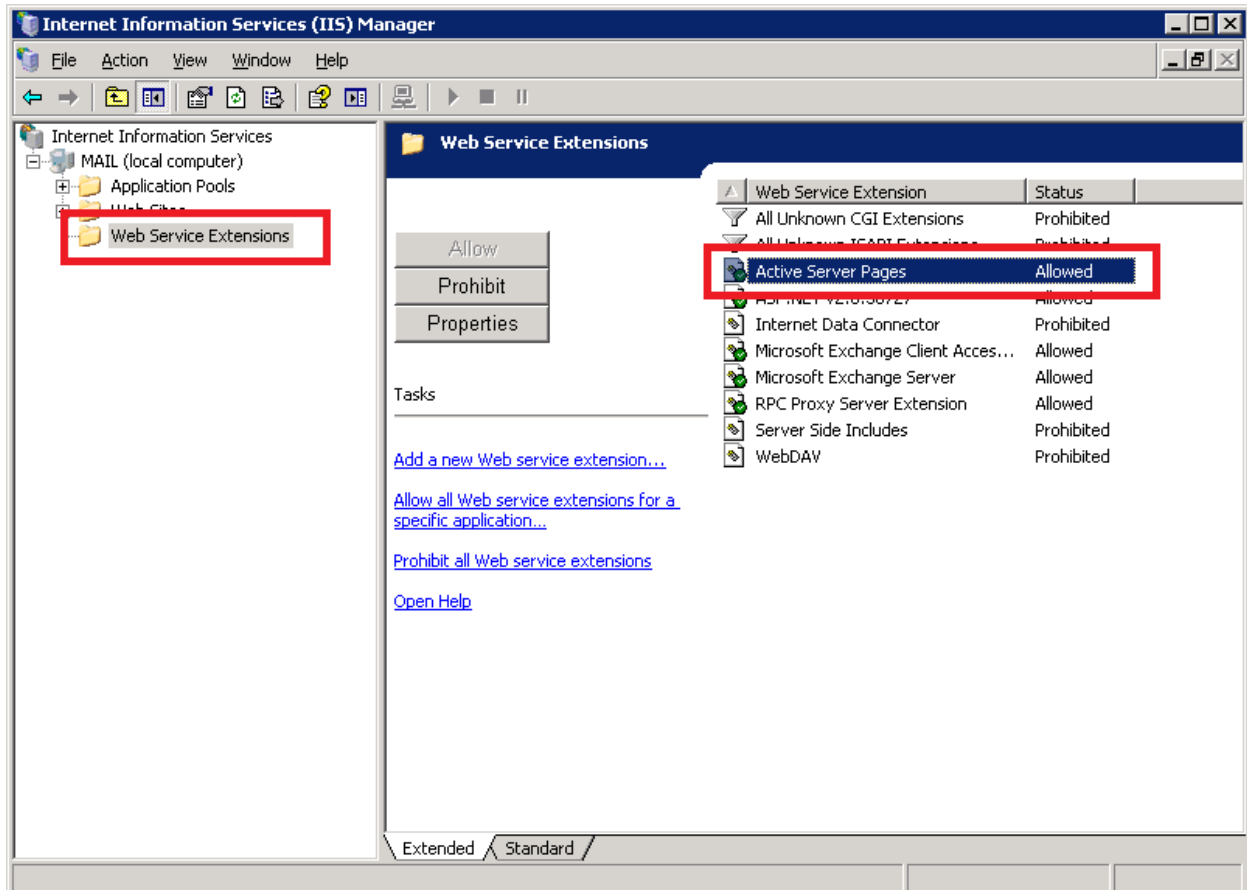
In Internet Information Services (IIS) Manager, right-click the **Default Web Site**, click **New**, and then click **Virtual Directory**.

When the Virtual Directory Creation Wizard starts, follow the instructions to create the virtual directory with the alias that is named "IISADMPWD." Make sure that the path points to the **C:\Windows\System32\Inetsrv\IISadmpwd** directory. Make sure that both "**Read**" permissions and "**Run Scripts (such as ASP)**" permissions are selected.

Make sure that the IISADMPWD virtual directory runs in the **MSEExchangeOWAAppPool** application pool. Right-click and choose **Properties** on the newly created Virtual Directory IISADMPWD:



Now make sure that the **Web Service Extensions** shows that **Active Server Pages** are **Allowed** :



Finally we need to restart the IIS 6 service.

Click **Start**, and then click **Run**.

In the **Open** box, type the following, and then press ENTER:

**iisreset**